



Is Decline in School Enrolment in India a Cause of Concern?

....Yes, it is

By

Arun C Mehta

Formerly Professor & Head of EMIS Department

NIEPA, New Delhi

Email: acmehta100@gmail.com

TABLES

**Table 1: Enrolment in Grades I to XII, 2012-13 to 2019-20
All India**

Year	Enrolment		
	Total, Grades I to XII	Change over Previous Year	%age Change
2012-13	25,42,75,128	-	
2013-14	25,85,10,656	42,35,528	1.67
2014-15	25,94,70,306	9,59,650	0.37
2015-16	26,05,96,960	11,26,654	0.43
2016-17	25,13,36,317	-92,60,643	-3.55
2017-18	25,09,89,193	-3,47,124	-0.14
2018-19	24,83,38,584	-26,50,609	-1.06
2019-20	25,09,71,683	26,33,099	1.06
Change over 2012-13	-	-33,03,445	-1.30

Source: UDISE, different years.

**Table 2: Total Schools: I to XII, 2012-13 to 2019-20
All India**

Year	Number of Schools		
	Total Schools, Grades I to XII	Change over Previous Year	%age Change
2012-13	15,00,768	-	
2013-14	15,18,160	17,392	1.16
2014-15	15,16,892	-1,268	-0.08
2015-16	15,22,346	5,454	0.36
2016-17	15,35,610	13,264	0.87
2017-18	15,58,903	23,293	1.52
2018-19	15,51,000	-7,903	-0.51
2019-20	15,07,708	-43,292	-2.79
Change over 2012-13		6,940	0.46

Source: UDISE, different years.

Table 3: Total Enrolment by Management, Grades I to XII, All India: 2018-19 & 2019-20

	Grade I to XII		
	Boys	Girls	Total
2018-19			
Government	6,28,66,476	6,58,49,893	12,87,16,369
Government Aided	1,42,59,069	1,32,70,953	2,75,30,022
Private Unaided	4,75,16,009	3,66,06,790	8,41,22,799
Others	42,16,038	37,53,356	79,69,394
Total	12,88,57,592	11,94,80,992	24,83,38,584
2019-20			
Government	6,23,61,708	6,57,80,888	12,81,42,596
Government Aided	1,39,51,013	1,30,63,225	2,70,14,238
Private Unaided	5,00,82,790	3,88,30,222	8,89,13,012
Others	36,87,114	32,14,723	69,01,837
Total	13,00,82,625	12,08,89,058	25,09,71,683
Change in Enrolment in 2019-20			
Government	-5,04,768	-69,005	-5,73,773
Government Aided	-3,08,056	-2,07,728	-5,15,784
Private Unaided	25,66,781	22,23,432	47,90,213
Others	-5,28,924	-5,38,633	-10,67,557
Total	12,25,033	14,08,066	26,33,099
Percentage Change in Enrolment			
Government	-0.8	-0.1	-0.4
Government Aided	-2.2	-1.6	-1.9
Private Unaided	5.4	6.1	5.7
Others	-12.5	-14.4	-13.4
Total	1.0	1.2	1.1

Source: UDISE-Plus, Department of School Education & Literacy, Ministry of Education, Government of India, 2018-19 data have been downloaded from its portal, and 2019-20 is used from UDISE-plus 2019-20 Report.

**Table 4: Share of Government & Private Managements: Schools & Enrolment
2018-19 & 2019-20**

Management	Schools			Enrolment		
	2018-19	2019-20		2018-19	2019-20	
	%age	%age	Number	%age	%age	Number
Government	67.0%	65.1	981146	49.0%	48.6%	121927212
Private Unaided	21.0%	22.4	337499	34.0%	35.4%	88913012
Government Aided	5.0%	5.6	84362	11.0%	10.8%	27014238
Other Government Managements	3.0%	3.4	51424	2.5%	2.5%	6215384
Madrassa	2.0%	1.6	23677	1.0%	1.3%	3183258
Unrecognized	2.0%	2.0	29600	2.0%	1.5%	3718579
Total	15,51,000	100.0	15,07,708	24,43,38,584	100.0%	25,09,71,683

Source: UDISE+ 2018-19 & 2019-20

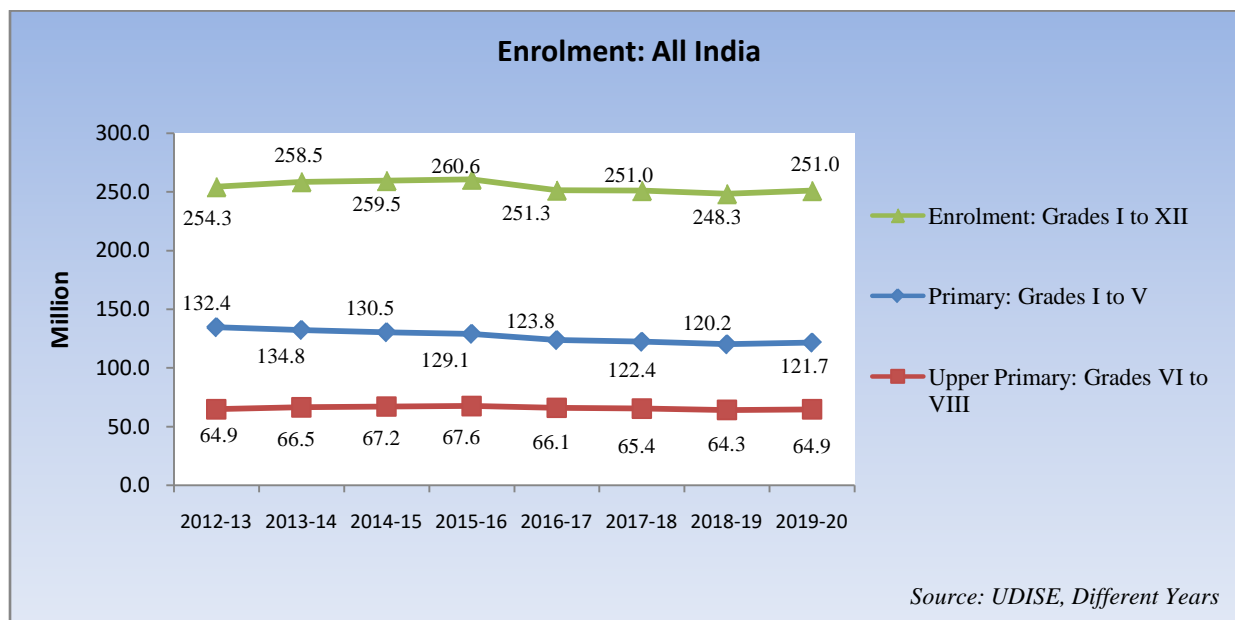


Table 5: Enrolment by Levels of Education: 2005-06 to 2019-20 (In Million)

Year	Enrolment								
	I-V			VI-VIII			I-VIII		
	Total	Government Management	Private Management	Total	Government Management	Private Management	Total	Government	Private
2005-06	124.62	-	-	43.67	-	-	168.29	-	-
2006-07	131.85	-	-	47.49	-	-	179.34	-	-
2007-08	134.13	101.15	32.74	50.91	32.50	18.36	185.04	133.65	51.10
2008-09	134.38	99.49	34.84	53.35	33.72	19.61	187.73	133.21	54.45
2009-10	133.41	96.22	37.10	54.47	34.37	20.06	187.88	130.59	57.16
2010-11	135.21	94.09	38.24	57.84	36.00	20.88	193.05	130.09	59.12
2011-12	137.10	91.65	41.90	61.96	37.75	22.97	199.06	129.40	64.87
2012-13	134.78	86.49	44.48	64.93	38.57	25.27	199.71	125.06	69.75
2013-14	132.43	83.12	45.67	66.47	38.84	25.57	198.90	121.96	71.24
2014-15	130.50	79.95	46.63	67.17	39.02	26.93	197.67	118.97	73.56
2015-16	129.12	78.05	47.19	67.59	38.87	27.46	196.71	116.92	74.65
2016-17	123.81	73.65	45.98	66.08	37.66	27.18	189.89	111.31	73.16
2017-18	122.38	69.34	47.50	65.44	36.49	27.34	187.82	105.83	74.84
2018-19	120.23	67.54	47.31	64.27	35.13	27.50	184.50	102.67	74.81
2019-20	121.69	66.78	49.77	64.87	34.91	28.60	186.56	101.69	78.37

Source: UDISE, different years. The total may not match because of unrecognized schools which are not added to private management.

Table 6: Share of Enrolment by Levels of Education: 2005-06 to 2019-20 (In Million)

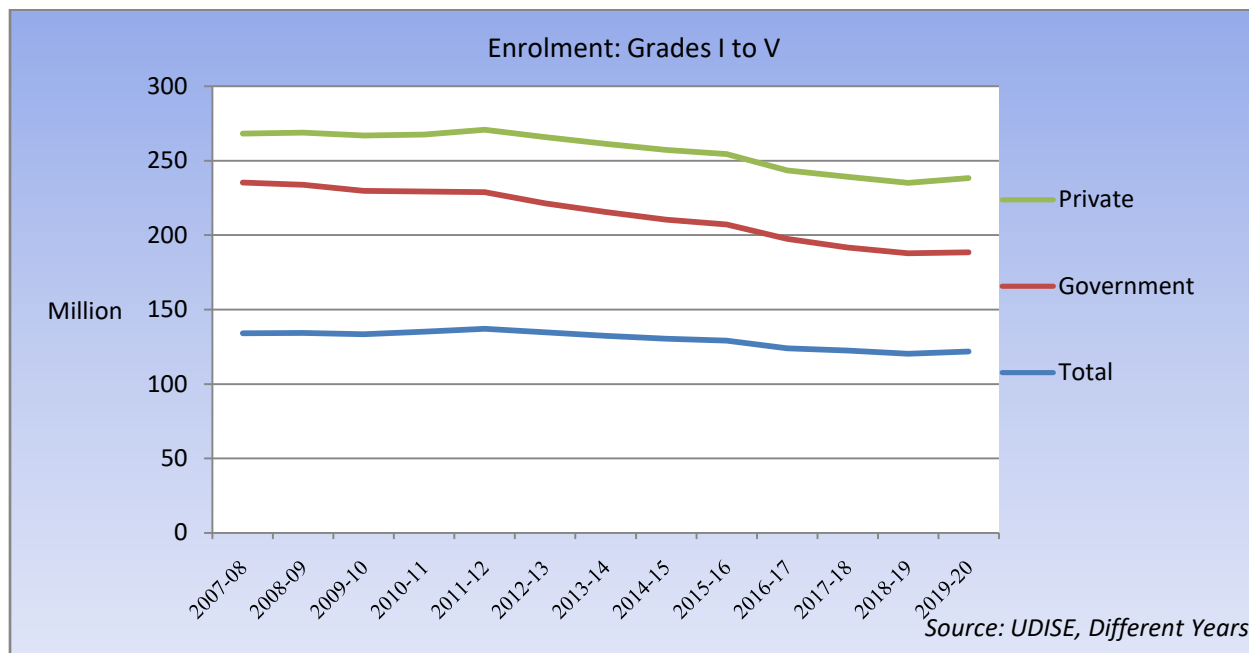
Year	Enrolment						
	Total Grades I to XII	Primary Grades I to V	%age	Upper Primary Grades VI to VIII	%age	Elementary Grades I to VIII	%age
2012-13	254.28	134.78	53.0	64.93	25.54	199.71	78.54
2013-14	258.51	132.43	51.2	66.47	25.71	198.90	76.94
2014-15	259.47	130.50	50.3	67.17	25.89	197.67	76.18
2015-16	260.60	129.12	49.5	67.59	25.94	196.71	75.48
2016-17	251.34	123.81	49.3	66.08	26.29	189.89	75.55
2017-18	250.99	122.38	48.8	65.44	26.07	187.82	74.83
2018-19	248.34	120.23	48.4	64.27	25.88	184.50	74.29
2019-20	250.97	121.69	48.5	64.87	25.85	186.56	74.34

Source: UDISE, different years.

**Table 7: Change in Primary Enrolment over the Previous year
2005-06 to 2019-20**

Year	Enrolment in Grades I-V (In Million)					Change over Previous Year
	Total	Change over Previous Year	Government	Change over Previous Year	Private	
2005-06	124.62	-	-	-	-	-
2006-07	131.85	7.23	-	-	-	-
2007-08	134.13	2.28	101.15	-	32.74	-
2008-09	134.38	0.25	99.49	-1.66	34.84	2.10
2009-10	133.41	-0.97	96.22	-3.27	37.10	2.26
2010-11	135.21	1.80	94.09	-2.13	38.24	1.14
2011-12	137.10	1.89	91.65	-2.44	41.90	3.66
2012-13	134.78	-2.32	86.49	-5.16	44.48	2.58
2013-14	132.43	-2.35	83.12	-3.37	45.67	1.19
2014-15	130.50	-1.93	79.95	-3.17	46.63	0.96
2015-16	129.12	-1.38	78.05	-1.90	47.19	0.56
2016-17	123.81	-5.31	73.65	-4.40	45.98	-1.21
2017-18	122.38	-1.43	69.34	-4.31	47.50	1.52
2018-19	120.23	-2.15	67.54	-1.80	47.31	-0.19
2019-20	121.69	1.46	66.78	-0.76	49.77	2.46

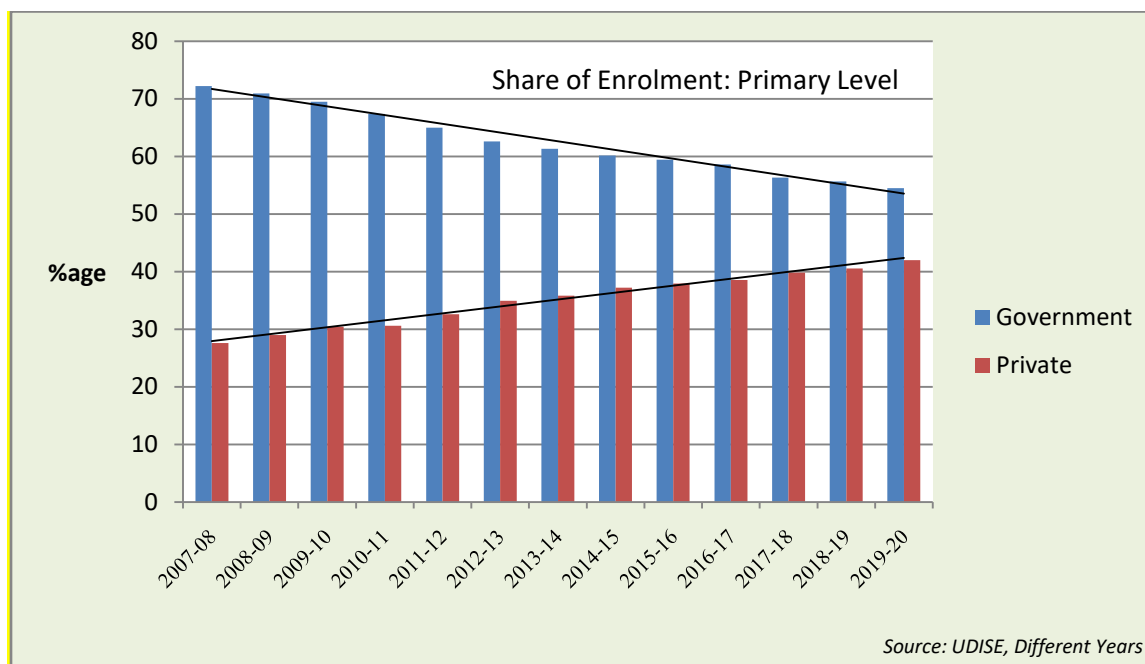
Source: UDISE, different years. The total may not match because of unrecognized schools which are not added to private management.



**Table 8: Percent Share of Enrolment by Levels of Education & Management
2005-06 to 2019-20**

Year	Primary: Grades I –V		Upper Primary: Grades VI-VIII		Elementary: Grades I-VIII	
	Government	Private	Government	Private	Government	Private
2007-08	75.41	24.41	63.84	36.06	72.23	27.62
2008-09	74.04	25.93	63.21	36.76	70.96	29.00
2009-10	72.12	27.81	63.10	36.83	69.51	30.42
2010-11	69.59	28.28	62.24	36.10	67.39	30.62
2011-12	66.85	30.56	60.93	37.07	65.01	32.59
2012-13	64.17	33.00	59.40	38.92	62.62	34.93
2013-14	62.77	34.49	58.43	38.47	61.32	35.82
2014-15	61.26	35.73	58.09	40.09	60.19	37.21
2015-16	60.45	36.55	57.51	40.63	59.44	37.95
2016-17	59.49	37.14	56.99	41.13	58.62	38.53
2017-18	56.66	38.81	55.76	41.78	56.35	39.85
2018-19	56.18	39.35	54.66	42.79	55.65	40.55
2019-20	54.88	40.90	53.82	44.09	54.51	42.01

Source: UDISE, different years. The total may not add to hundred because of unrecognized schools which are not added to private management.



**Table 9: Change in Enrolment in 2019-20 over 2018-19, All India
Elementary Level**

Management	Primary			Upper Primary			Elementary		
	Boys	Girls	Total	Boys	Girls	Total	Boys	Girls	Total
Change in Enrolment									
Govt.	-4,24,087	-3,40,643	-7,64,730	-1,82,203	-42,021	-2,24,224	-6,06,290	-3,82,664	-9,88,954
Govt. Aided	-71,535	-60,161	-1,31,696	-92,567	-66,344	-1,58,911	-1,64,102	-1,26,505	-2,90,607
Private unaided	13,83,102	12,02,399	25,85,501	6,73,188	5,87,523	12,60,711	20,56,290	17,89,922	38,46,212
Others	-1,44,857	-87,685	-2,32,542	-1,29,934	-1,41,281	-2,71,215	-2,74,791	-2,28,966	-5,03,757
Total	7,42,623	7,13,910	14,56,533	2,68,484	3,37,877	6,06,361	10,11,107	10,51,787	20,62,894
%age Change									
Govt.	-1.27	-0.99	-1.13	-1.07	-0.23	-0.64	-1.20	-0.73	-0.96
Govt. Aided	-2.47	-2.12	-2.30	-2.27	-1.72	-2.00	-2.35	-1.89	-2.13
Private unaided	5.91	6.61	6.22	6.01	7.01	6.44	5.94	6.74	6.29
Others	-4.95	-3.58	-4.33	-15.35	-17.82	-16.54	-7.28	-7.06	-7.18
Total	1.19	1.24	1.21	0.81	1.09	0.94	1.06	1.18	1.12

Source: UDISE+ 2018-19 and 2019-20

**Table 10: Change in Enrolment in 2019-20 over 2018-19, All India
Secondary Level**

Year	Secondary		
	Boys	Girls	Total
2018-19			
Government	82,14,637	87,78,029	1,69,92,666
Government Aided	41,92,987	37,31,556	79,24,543
Private unaided	73,57,116	55,36,321	1,28,93,437
Others	2,42,007	2,81,918	5,23,925
Total	2,00,06,747	1,83,27,824	3,83,34,571
2019-20			
Government	81,96,448	88,37,395	1,70,33,843
Government Aided	41,13,365	36,65,516	77,78,881
Private unaided	76,19,886	57,38,914	1,33,58,800
Others	1,42,657	1,50,252	2,92,909
Total	2,00,72,356	1,83,92,077	3,84,64,433
Change in Enrolment			
Government	-18,189	59,366	41,177
Government Aided	-79,622	-66,040	-1,45,662
Private unaided	2,62,770	2,02,593	4,65,363
Others	-99,350	-1,31,666	-2,31,016
Total	65,609	64,253	1,29,862
%age Change			
Government	-0.2	0.7	0.2
Government Aided	-1.9	-1.8	-1.8
Private unaided	3.6	3.7	3.6
Others	-41.1	-46.7	-44.1
Total	0.3	0.4	0.3

Source: Same as Table 3.

**Table 11: Change in Enrolment in 2019-20 over 2018-19, All India
Higher Secondary Level**

Year	Higher Secondary		
	Boys	Girls	Total
2018-19			
Government	43,22,979	47,29,548	90,52,527
Government Aided	30,91,157	28,56,891	59,48,048
Private Unaided	55,67,446	45,09,026	1,00,76,472
Others	2,01,050	2,28,720	4,29,770
Total	1,31,82,632	1,23,24,185	2,55,06,817
2019-20			
Government	44,42,690	49,83,841	94,26,531
Government Aided	30,26,825	28,41,708	58,68,533
Private Unaided	58,15,167	47,39,943	1,05,55,110
Others	46,267	50,719	96,986
Total	1,33,30,949	1,26,16,211	2,59,47,160
Change in Enrolment			
Government	1,19,711	2,54,293	3,74,004
Government Aided	-64,332	-15,183	-79,515
Private unaided	2,47,721	2,30,917	4,78,638
Others	-1,54,783	-1,78,001	-3,32,784
Total	1,48,317	2,92,026	4,40,343
%age Change			
Government	2.8	5.4	4.1
Government Aided	-2.1	-0.5	-1.3
Private unaided	4.4	5.1	4.8
Others	-77.0	-77.8	-77.4
Total	1.1	2.4	1.7

Source: Same as Table 3.

**Table 12: Projected Child Population
2011 to 2021, All India**

(Figures in thousand)

Age/Age-Group	Year			Average Annual Growth Rate (%) 2011 to 2021
	2011	2016	2021	
Age-6	24,913	23,494	23,494	-0.58
6 to 10+	1,26,307	1,19,353	1,17,842	-0.69
11 to 13+	77,731	75,042	70,550	-0.96
14 to 15+	50,315	50,801	48,425	-0.38
16 to 17+	49,162	51,694	49,647	0.10
Total	4,65,944	4,68,859	4,62,217	-0.08

Source: Report of the Technical Group on Population Projections, National Commission on Population, Ministry of Health & Family Welfare, Government of India, July 2020. The growth rate has been calculated by the author.